

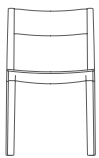


## Folk

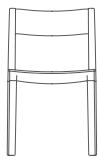
Design by PearsonLloyd

Folk is both timeless in its seemingly familiar design, and timely in its modest and ingenious flexibility. A range of wood, plastic and Aluminium finishes, different colours and upholstery options allow you to change Folk's flavour so that it can appear like a range

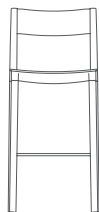
of different chairs that somehow sit together harmoniously in one space.



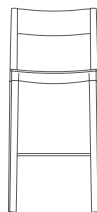
FLK101



FLK103



FLK301



FLK303



## Design PearsonLloyd

Luke Pearson and Tom Lloyd first met while studying Furniture Design and Industrial Design respectively, at London's prestigious Royal College of Art. They set up their multi award winning design studio in 1997. Since then the studio has created stunning

solutions for a variety of international clients from the aviation, workplace, urban design and healthcare sectors identifying and responding to shifting patterns of behaviour in contemporary life.

### Standard Features

(\* - Selected models only)

Beech ply seat with a clear finish\*

Beech ply back with a clear finish\*

Plastic seat — Colour: Off-Black\*

Plastic back — Colour: Off-Black\*

Cast Aluminium frame

Solid Beech legs

Plastic glides

Stacks up to 4 high

### Optional Features

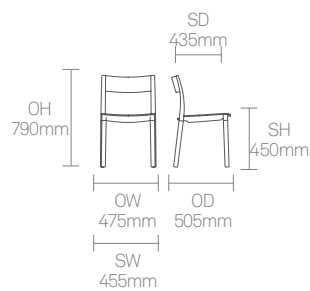
(\* - Selected models only)

Oak ply seat, back and solid Oak legs\*

Solid Oak legs\*

Plastic glides with felt

## Dimensions



### Standard Features

(\* - Selected models only)

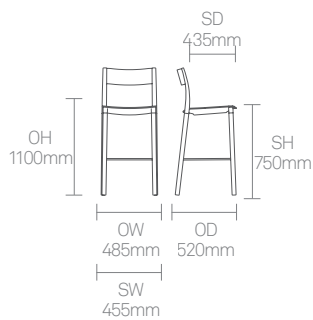
- Beech ply seat with a clear finish\*
- Beech ply back with a clear finish\*
- Plastic seat — Colour: Off-Black\*
- Plastic back — Colour: Off-Black\*
- Cast Aluminium frame
- Solid Beech legs
- Footrest
- Footrest protector
- Plastic glides

### Optional Features

(\* - Selected models only)

- Oak ply seat, back and solid Oak legs\*
- Solid Oak legs\*
- Plastic glides with felt

## Dimensions



## Finish Options

Beech seat, back and legs with a clear finish\*

Plastic seat and back available in Off-Black, White, Crayon Grey, Pistachio, Aubergine or Seattle Green\*

Beech seat, back and legs available in Off-Black, White, Crayon Grey, Pistachio, Aubergine or Seattle Green colour wash or stained\*

Solid Oak legs available in White, Crayon Grey, Pistachio, Aubergine and Seattle Green colourwash or stained\*

Oak seat, back and legs with a clear finish\*

Cast Aluminium frame available in Off-Black, White, Crayon Grey, Pistachio, Aubergine or Seattle Green

### Standard Wood Finishes



Clear Beech



Clear Oak

### Plastic Finishes



Aubergine plastic



Crayon Grey plastic



Off Black plastic



Pistachio plastic

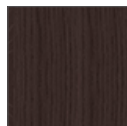


Seattle Green plastic

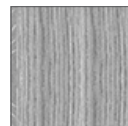


White plastic

### Wood Colour Washes



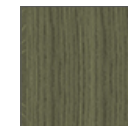
Aubergine colour wash



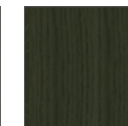
Crayon Grey colour wash



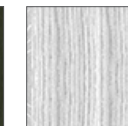
Off Black colour wash



Pistachio colour wash

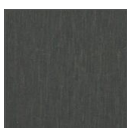


Seattle Green colour wash

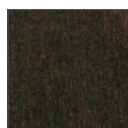


White colour wash

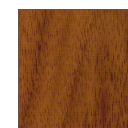
### Wood Stains



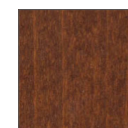
Wenge wood stain



Dark Walnut wood stain



American Walnut wood stain



American Cherry wood stain