

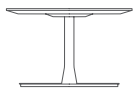


## FortySeven

Design by Allermuir

These simple, elegant and versatile tables are still constructed with the same meticulous attention to detail and quality but have now been sculpted and crafted to

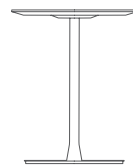
give FortySeven, a softer and more delicate silhouette with ultimate stability in mind.



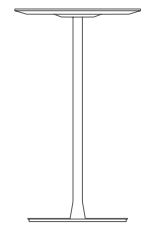
Low Level



Work Lounge



Dining Height



Bar Height



## Design Allermuir

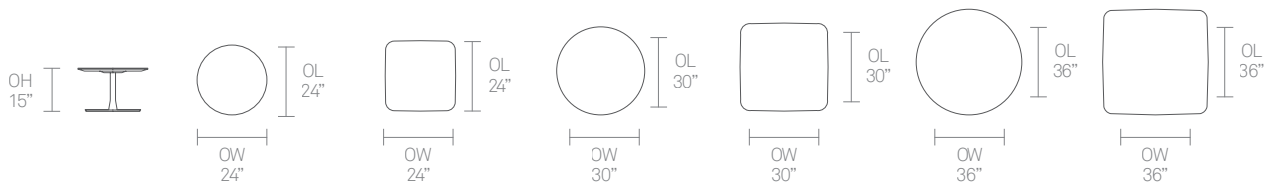
Our team of talented in house designers is responsible for creating elegant, innovative furniture designs that not only look beautiful, but minimize the impact on the world around us.

Constantly exploring new product trends and keeping up to date with the latest innovations in technology and materials, our design team creates world class designs of the highest quality.

### Standard Features

- 1" laminate faced MDF core top
- 1" Grade A Laminate top\*
- Steel pedestal base
- Plastic glides with leveling adjustment

### Dimensions



### Standard Features

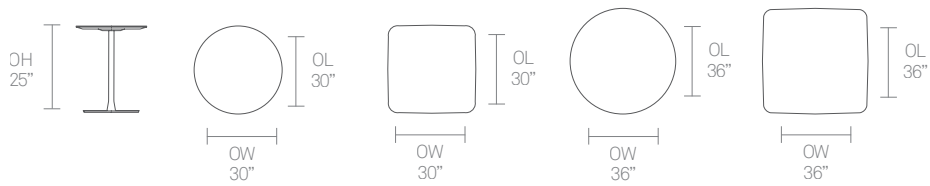
1" laminate faced MDF core top

1" Grade A Laminate top\*

Steel pedestal base

Plastic glides with leveling adjustment

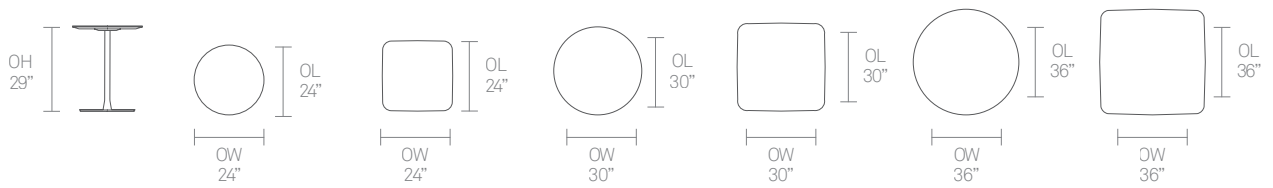
### Dimensions



### Standard Features

- 1" laminate faced MDF core top
- 1" Grade A Laminate top\*
- Steel pedestal base
- Plastic glides with leveling adjustment

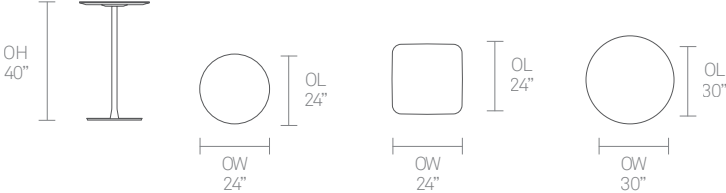
### Dimensions



### Standard Features

- 1" laminate faced MDF core top
- 1" Grade A Laminate top\*
- Steel pedestal base
- Plastic glides with leveling adjustment

### Dimensions



## Finish Options

1" laminate faced MDF core top with a clear finish edge profile\*

Steel pedestal frame available in Black, White or Stone powder coat

### Frame Finishes



Black powder coat



White powder coat

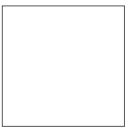


Stone powder coat

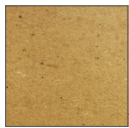
### Edge Stains



Solid Black edge stain

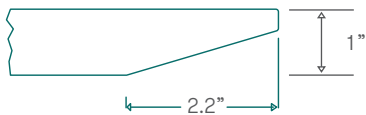


Solid White edge stain



Clear edge stain

### Edge References



### Ref Group Number 38

1" MDF core, specified laminate face & counterbalance with 2.2" chamfered edge. The edge is clear finish as standard or can be stained.