

Baudot - Strings

Design - Allermuir

Baudot Strings provides an attractive alternative solution to screening whilst noticeably improving the acoustics within a space. Constructed from extruded aluminum poles surrounded by foam and fabric, Strings provide an excellent surface to absorb and diffuse sound waves. With 24 fabric colors and various heights available, interior designers can create an arrangement to fit in any environment.



standard & optional features

- Standard feature
- Not available

	BDSR20 Rectangular Base 39.25" x 11"	BDS20A 70.75" High Uprights x5	BDS20B 67" High Uprights x5	BDS20C 63" High Uprights x5	BDS20D 59" High Uprights x5
Weight	<input type="checkbox"/>	110lbs	<input type="checkbox"/>	<input type="checkbox"/>	<input type="checkbox"/>
Steel base plate finished in Black powder coat	<input checked="" type="checkbox"/>	<input type="checkbox"/>	<input type="checkbox"/>	<input type="checkbox"/>	<input type="checkbox"/>
Upholstered uprights finished in acoustically tested fabric	<input type="checkbox"/>	<input checked="" type="checkbox"/>	<input checked="" type="checkbox"/>	<input checked="" type="checkbox"/>	<input checked="" type="checkbox"/>

Code	Base Plate	Total Unit Price (\$)	
BDSR20 • Rectangular base • 39.25" x 11"	1	3790	
	Fabric: Camira Synergy		
BDS20A • 70.75" high x 3.5" dia • Uprights x5	1 set of 5 uprights		
BDS20B • 67" high x 3" dia • Uprights x5	1 set of 5 uprights		
BDS20C • 63" high x 3.5" dia • Uprights x5	1 set of 5 uprights		
BDS20D • 59" high x 3" dia • Uprights x5	1 set of 5 uprights		

* [Click here to see Camira Synergy fabric options](#)

All prices listed in US \$

dimensions— OH - Overall Height OD - Overall Depth OW - Overall Width



Baudot - Strings

Design - Allermuir



Baudot Strings provides an attractive alternative solution to screening whilst noticeably improving the acoustics within a space. Constructed from extruded aluminum poles surrounded by foam and fabric, Strings provide an excellent surface to absorb and diffuse sound waves. With 24 fabric colors and various heights available, interior designers can create an arrangement to fit in any environment.



standard & optional features

- Standard feature
- Not available

	BDSR12 Rectangular Base 27.5" x 11"	BDS12A 70.75" High Uprights x3	BDS12B 67" High Uprights x3	BDS12C 63" High Uprights x3	BDS12D 59" High Uprights x3
Weight	<input type="checkbox"/>	70lbs	<input type="checkbox"/>	<input type="checkbox"/>	<input type="checkbox"/>
Steel base plate finished in Black powder coat	<input checked="" type="checkbox"/>	<input type="checkbox"/>	<input type="checkbox"/>	<input type="checkbox"/>	<input type="checkbox"/>
Upholstered uprights finished in acoustically tested fabric	<input type="checkbox"/>	<input checked="" type="checkbox"/>	<input checked="" type="checkbox"/>	<input checked="" type="checkbox"/>	<input checked="" type="checkbox"/>

Code	Base Plate	Total Unit Price (\$)	
BDSR12 • Rectangular base • 27.5" x 11"	1	2513	
	Fabric: Camira Synergy		
BDS12A • 70.75" high x 3.5" dia • Uprights x3	1 set of 3 uprights		
BDS12B • 67" high x 3" dia • Uprights x3	1 set of 3 uprights		
BDS12C • 63" high x 3.5" dia • Uprights x3	1 set of 3 uprights		
BDS12D • 59" high x 3" dia • Uprights x3	1 set of 3 uprights		

* [Click here to see Camira Synergy fabric options](#)

All prices listed in US \$

dimensions— OH - Overall Height OD - Overall Depth OW - Overall Width



Baudot - Strings

Design – Allermuir

Baudot Strings provides an attractive alternative solution to screening whilst noticeably improving the acoustics within a space. Constructed from extruded aluminum poles surrounded by foam and fabric, Strings provide an excellent surface to absorb and diffuse sound waves. With 24 fabric colors and various heights available, interior designers can create an arrangement to fit in any environment.



standard & optional features

- Standard feature
- Not available

	BDSR8 Rectangular Base 19.75" x 11"	BDS8A 70.75" High Uprights x2	BDS8B 67" High Uprights x2	BDS8C 63" High Uprights x2	BDS8D 59" High Uprights x2
Weight	□	47lbs	□	□	□
Steel base plate finished in Black powder coat	●	□	□	□	□
Upholstered uprights finished in acoustically tested fabric	□	●	●	●	●

Code	Base Plate	Total Unit Price (\$)
BDSR8 • Rectangular base • 19.75" x 11"	1	1826
Fabric: Camira Synergy		
BDS8A • 70.75" high x 3.5" dia • Uprights x2	1 set of 2 uprights	
BDS8B • 67" high x 3" dia • Uprights x2	1 set of 2 uprights	
BDS8C • 63" high x 3.5" dia • Uprights x2	1 set of 2 uprights	
BDS8D • 59" high x 3" dia • Uprights x2	1 set of 2 uprights	

* [Click here to see Camira Synergy fabric options](#)

All prices listed in US \$

dimensions— OH - Overall Height OD - Overall Depth OW - Overall Width



[Back to index](#)

Baudot - Strings

Design – Allermuir

Baudot Strings in its circular variant complements the screen version whilst noticeably improving the acoustics within a space. Constructed from extruded aluminum poles surrounded by foam and fabric, Strings provide an excellent surface to absorb and diffuse sound waves. With 24 fabric colors and various heights available, interior designers can create an arrangement to fit in any environment.



standard & optional features

- Standard feature
- Not available

	BDSC12 Circular Base 17.75" dia	BDS12A 70.75" High String x 3	BDS12B 67" High String x 3	BDS12C 63" High String x 3	BDS12D 59" High String x 3
Weight	□	□	□	□	□
Steel base plate finished in Black powder coat	●	□	□	□	□
Upholstered uprights in acoustically tested fabric	□	●	●	●	●

Code	Base Plate	Total Unit Price (\$)
BDSC12 • Circular base • 17.75" dia	1	2469
Fabric: Camira Synergy		
BDS12A • 70.75" high x 3.5" dia • Uprights x3	1 set of 3 uprights	
BDS12B • 67" high x 3" dia • Uprights x3	1 set of 3 uprights	
BDS12C • 63" high x 3.5" dia • Uprights x3	1 set of 3 uprights	
BDS12D • 59" high x 3" dia • Uprights x3	1 set of 3 uprights	

* [Click here to see Camira Synergy fabric options](#)

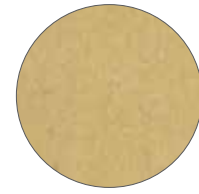
All prices listed in US \$

dimensions— OH - Overall Height OD - Overall Depth OW - Overall Width

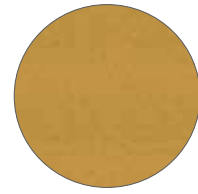


Camira Synergy

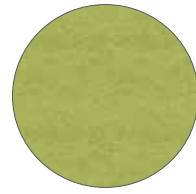
Fabrics - Allermuir



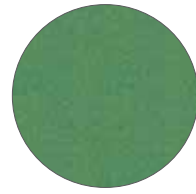
Summon



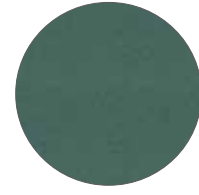
Lateral



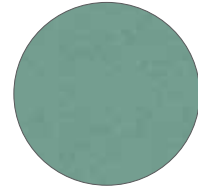
Gather



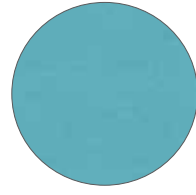
Pact



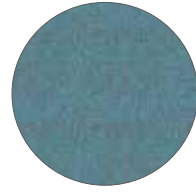
Append



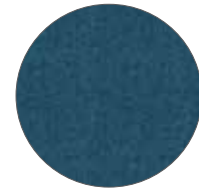
Regard



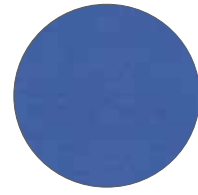
Support



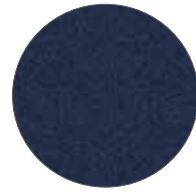
Kinship



Group



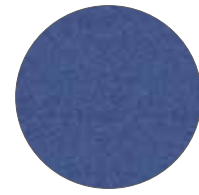
Guild



Alike



Sync



Collaborate



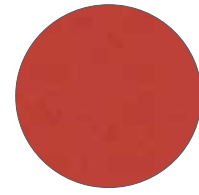
Fellowship



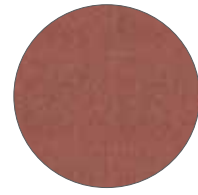
Process



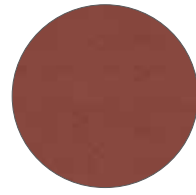
Compound



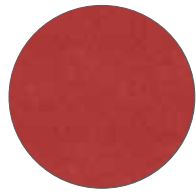
Mutual



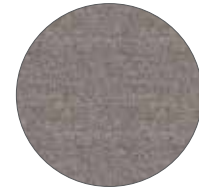
Work



Combo



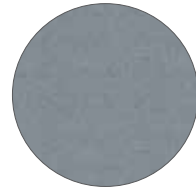
Share



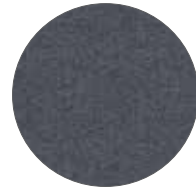
Affix



Serendipity



Level



Chemistry

[Back to index](#)

Baudot - Zero

Design - Allermuir

The double-sided domed acoustic panel is the most adaptable and visually striking product within the Baudot range. With height adjustability and a dense concrete base with a small footprint, the Baudot Zero modules can be reconfigured to adapt to changing environments and activities.



standard & optional features

- Standard feature
- Not available

	BDZ1 Freestanding
Weight	42lbs
Foam construction	●
Upholstered in acoustically tested fabric	●
Steel stem finished in Black powder coat	●
Cornish granite concrete cast base	●
Height adjustable	●
Felt base pads	●

Optional features:

Two-tone upholstery	+ \$50
---------------------	--------

Zero - Freestanding

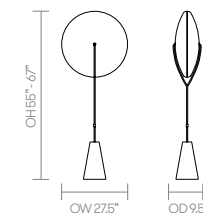
	Fabric: Camira Synergy
BDZ1 • Freestanding	1893

[* Click here to see Camira Synergy fabric options](#)

All prices listed in US \$



dimensions— OH - Overall Height OD - Overall Depth OW - Overall Width



Baudot - Zero

Design - Allermuir

A domed wall mounted shape to improve acoustics without losing floor space. Available in a combination of three sizes and 24 colors, Baudot Wall diffuses noise by both absorbing and deflecting sound, while adding visual interest to walls.



standard & optional features

- Standard feature
- Not available

	BDZ2 Wall Mounted 20" dia	BDZ3 Wall Mounted Wood Frame 19.75" dia	BDZ4 Wall Mounted 30" dia	BDZ5 Wall Mounted Wood Frame 29.75" dia	BDZ6 Wall Mounted 39.75" dia	BDZ7 Wall Mounted Wood Frame 39.25" dia
Weight	5lbs	5lbs	9lbs	9lbs	18lbs	18lbs
Foam construction	●	●	●	●	●	●
Solid ash frame with a clear finish *1	□	●	□	●	□	●
Upholstered in acoustically tested fabric	●	●	●	●	●	●

Optional features:

1. Solid ash frame can be stained or color washed	□	+ \$38	□	+ \$38	□	+ \$38
---	---	--------	---	--------	---	--------

- * [Click here to see Camira Synergy fabric options](#)
- * [Click here to see Seating- Wood Finishes \(frame colors\)](#)

[Back to index](#)

Zero - Wall Mounted

	Fabric: Camira Synergy
BDZ2 • Wall Mounted • 20" dia	266
BDZ3 • Wall Mounted • Wood frame • 19.75" dia	478
BDZ4 • Wall Mounted • 30" dia	419
BDZ5 • Wall Mounted • Wood frame • 29.75" dia	662
BDZ6 • Wall Mounted • 39.75" dia	726
BDZ7 • Wall Mounted • Wood frame • 39.25" dia	951



All prices listed in US \$

dimensions— OH - Overall Height OD - Overall Depth OW - Overall Width

